

## MISSION

Real Estate Division supports the District's Civil Works Programs, Military Programs, and International and Interagency Programs; and executes independent real estate programs and projects in support of regional and enterprise objectives.

Multidisciplinary professionals develop, execute, and administer real estate documents and other technical studies in compliance with numerous federal and state laws, policies and regulations.

## KEY DIVISION PRIORITIES

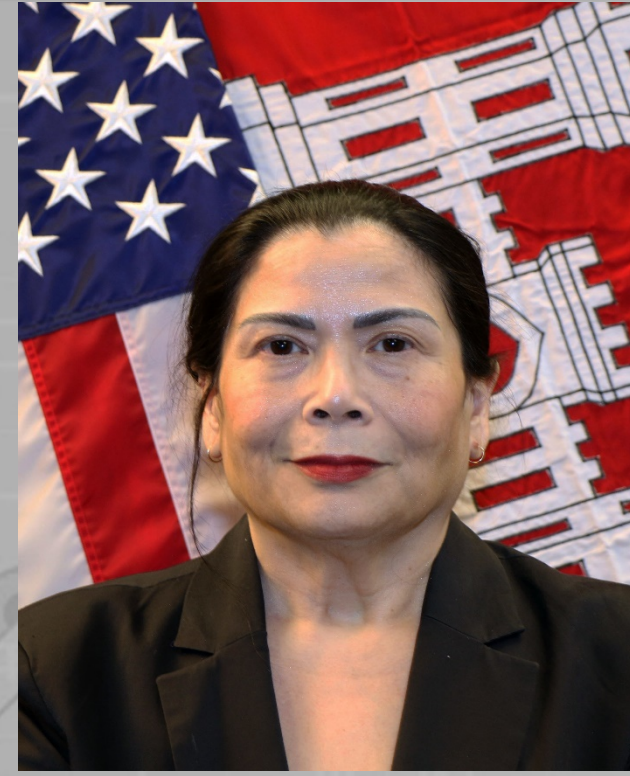
Real estate acquisition, management and disposal support for:

- Civil Works Programs & Projects
- Military Installations and Military Construction (MILCON) Programs & Projects
- Interagency Programs & Projects (e.g. CBP, VA, DOE)
- Armed Forces Recruiting Centers & Leased Government Housing Programs
- National real estate programs (BRAC, RPX, FUDS / DERP, Section 408 Permitting)
- Real estate appraisal and other valuation services and products to South Pacific Division and other partners and stakeholders

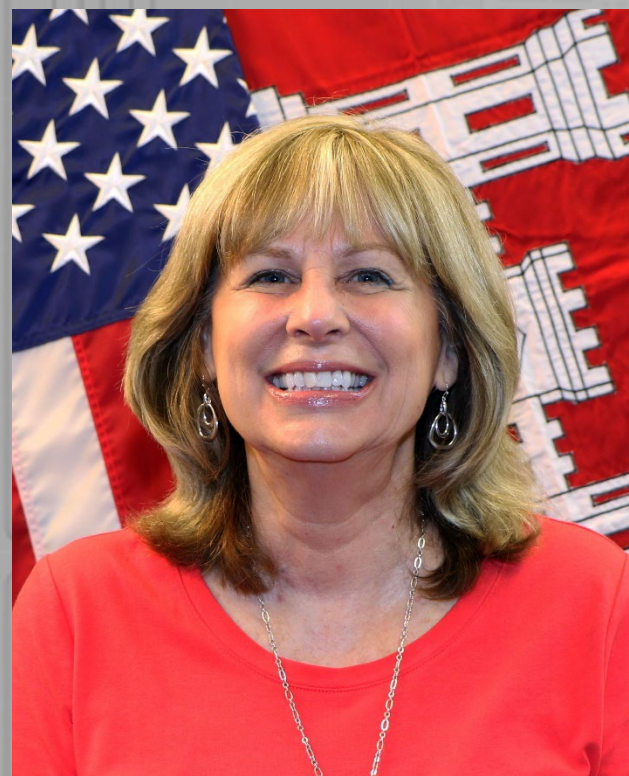
## REAL ESTATE DIVISION LEADERSHIP



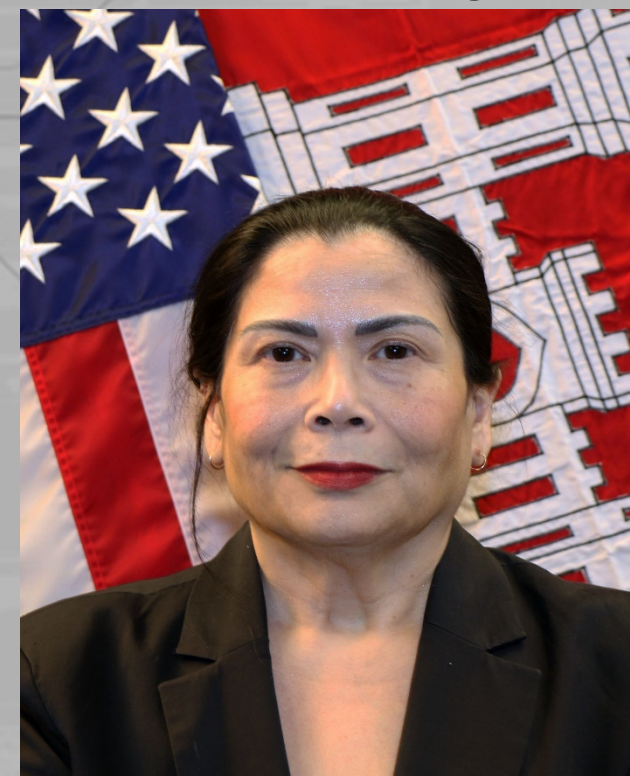
Division Chief  
Mr. Adam Olson



Deputy Division Chief  
Ms. Lisa Ng



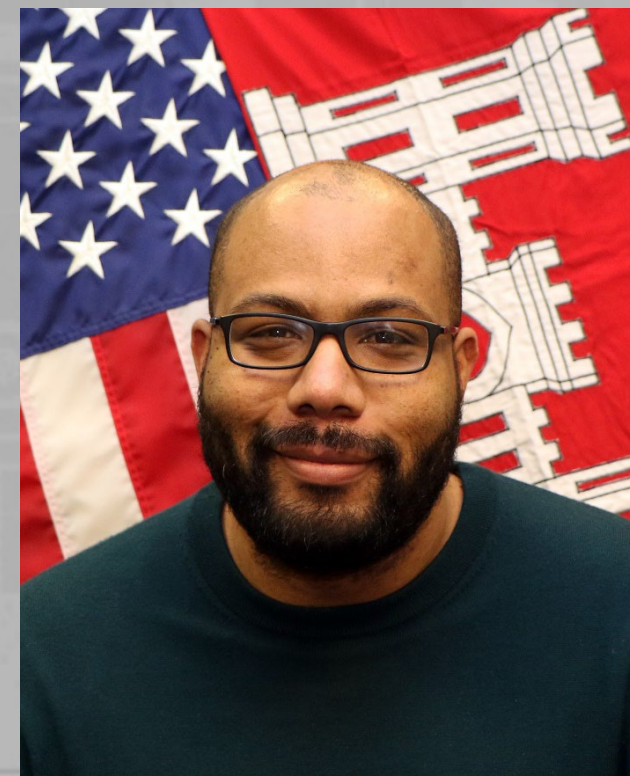
Regional Appraisal Center Chief  
Ms. Linda Molinari



Leasing Branch Chief  
Ms. Lisa Ng (acting)



Northern Branch Chief  
Ms. Kelly Boyd

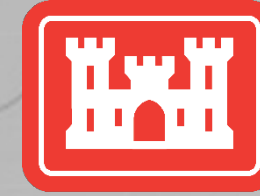


Southern Branch Chief  
Mr. Ryan Taylor

**USACE Sacramento District  
Real Estate Division  
1325 J Street Suite 802  
Sacramento, CA 95814  
(916) 557-6993**

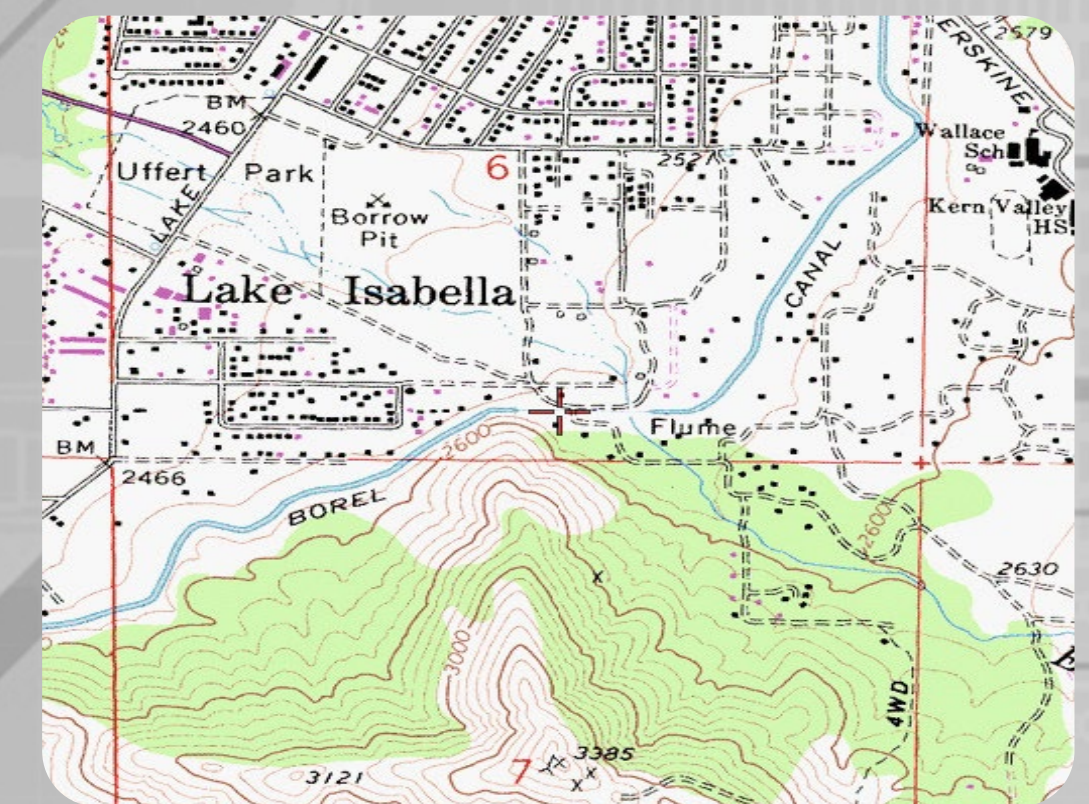


[www.spk.usace.army.mil](http://www.spk.usace.army.mil)



**U.S. Army Corps of Engineers  
Sacramento District**

## REAL ESTATE DIVISION



## Regional Appraisal Center

The South Pacific Division (SPD) Regional Appraisal Center (RAC) located at the Sacramento District provides real estate appraisal and valuation services throughout SPD, valuing properties ranging from minor easements to multi-million-dollar facilities. The RAC professionals are highly recognized by industry peers and deliver appraisal services "On-time and Within Budget."

RAC valuation services include: appraisals; appraisal reviews; statements of work; cost estimates, gross appraisals and other planning products; market and feasibility studies; fair market rent appraisals; consultation and litigation testimony; and civil works project LERRDs credit reviews.



## Leasing Branch

The Leasing Branch manages a \$10M program to acquire and manage Armed Forces Recruiting Centers for the regular and reserve components of the Army, Air Force, Navy and Marine Corps and National Guard. The Leasing Branch also leases housing for certain service members and their dependents. In addition, the Leasing Branch acquires and manages leased commercial space for USACE, such as District satellite or project management offices, as well as other federal agencies on request.

## Northern Branch & Southern Branch

The Northern and Southern Branches provide a full range of acquisition, management and disposal real estate support for all civil works, military and interagency projects throughout the region. The Northern Branch primarily provides real estate support to Northern California, Nevada, Utah and portions of Colorado, Idaho, Oregon and Wyoming. The Southern Branch primarily provides support to central and southern California.

Both branches handle acquisitions of real property by negotiated purchase and condemnation for civil works and military projects, as well as the crediting of Lands, Easements, Rights-of-Way, Relocation, and Disposal Areas (LERRDs) for acquisitions by local sponsors for cost-shared projects.

Additionally, the Branches provide similar services for other federal agencies who use our specialized expertise in acquiring lands for large projects. For example, the Southern Branch routinely assists the Customs and Border Patrol (CBP) in acquiring lands for border security.



These Branches also acquire, manage and dispose of real estate in support Army and Air Force installations and military construction. The Branches also manage 115,000+ acres at

USACE recreational parks and lakes. These activities include issuing easements, recreational leases, licenses and permits to third-parties as well as resolving encroachments on federal lands.



These Branches also support multiple national real estate programs:

- Base Realignment and Closure (BRAC) Program (for all Army and Air Force BRAC sites within the Sacramento District and San Francisco District): disposal of excess real property
- Reserve Property Exchange (RPX) Program (all U.S. west of the Rocky Mountains): exchange of underutilized Army Reserve lands and facilities for construction of new facilities to support the Reserve mission.
- Formerly Used Defense Sites (FUDS) / Defense Environmental Restoration Program (DERP): acquisition of temporary or permanent rights for ongoing environmental cleanup projects.
- Section 408 Permitting Program: provide real estate review of proposed projects that may alter completed civil-works projects